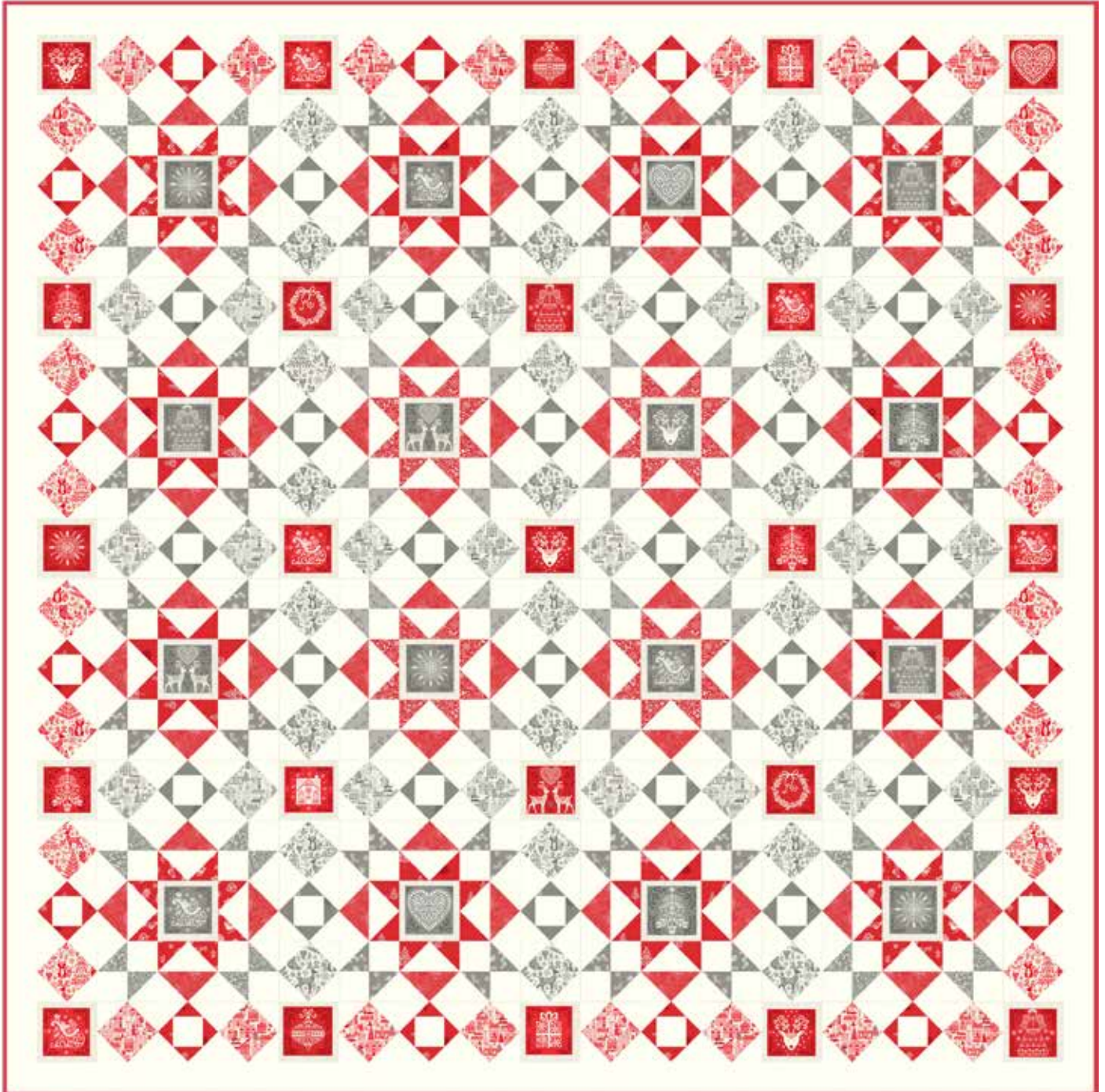


Scandi 2019

Finished size 72" x 72" (1.80cm x 1.80cm)

Designed by Lynne Goldsworthy of lilysquilts.blogspot.com
using the Scandi 2019 collection from Makower UK www.makoweruk.com



Scandi 2019

Finished size 72" x 72" (1.80cm x 1.80cm)

Fabric Requirements

Red	Description	Amount	Cut
1473/Q1	Linen Texture (background "BKG")	5 metres / 5 ½ yards	See cutting instructions below
1473/R	Linen Texture (binding)	½ metre ½ yard	Seven 2 ½" WOF strips for the binding
2125R	Forest Animals	½ yard	Sixteen 4 ½" squares fussy cut
2125R	Forest Animals (backing)	4 ¼ metres 4 ½ yards	Two equal lengths
2125S	Forest Animals	¾ metre ¾ yard	Twenty-four 4 ½" squares fussy cut
2126R	Scatter	One FQ	Four 6 ¼" squares
2126S	Scatter	40cm/15"	Eight 6 ¼" squares
2127R	Houses	30cm/12"	Sixteen 4 ½" squares
2127S	Houses	40cm/15"	Twenty-four 4 ½" squares
2128R	Storm	50cm/20"	Sixty-four 2 ½" x 4 ½" rectangles
2129S	Pine Needles	One FQ	Four 6 ¼" squares
2130R	Snowflakes	One FQ	Four 6 ¼" squares
2130S	Snowflakes	One FQ	Four 6 ¼" squares
2131R	Trees	½ metre ½ yard	Two 6 ¼" WOF strips cut into eight 6 ¼" squares - cut the remainder into twenty-four 2 ½" squares One 2 ½" WOF strip cut into eight 2 ½" squares
2131S	Trees	One FQ	Forty-eight 2 ½" squares
2132-1	Squares	One panel 60cm/24"	Cut twenty-five red and sixteen grey labels each cut to ¼" away from the edge of the label
Wadding	2m square 80" square	279 Cotton Mix 80-20 from http://www.vlieseline.com/en	
Threads		Aurifil 50wt for piecing and 40wt for quilting from http://www.aurifil.com	
Templates		Thirty-two HST templates Forty DES templates (two per sheet)	

Notes:

- Read the pattern in full before starting.
- ¼" seams are used throughout except where stated otherwise.
- Press after each seam, pressing seams open or to one side as preferred.
- WOF - width of fabric - a strip of fabric cut from selvedge to selvedge or from the selvedge to the centre cut in the case of a FQ
- This pattern uses foundation paper piecing. If you are not familiar with this technique, we suggest practicing on scraps first and the following online tutorial is a useful guide: <http://www.lovepatchworkandquilting.com/blog/foundation-paper-piece>
- Make sure to visit <http://www.makoweruk.com/projects/> to ensure you are working from the most up-to-date version of the pattern.

Making the quilt

1. Cut the fabrics as listed in the fabric requirements schedule and the cream linen texture as follows:
 - Nineteen 1" WOF strips cut into eighty-two 3 ¾" and eight-two 4 ¾" lengths
 - Six 3" WOF strips cut into eighty-two 3" squares each cut in half on the diagonal
 - Six 6 ¼" WOF strips cut into thirty-two 6 ¼" squares
 - Thirty-nine 2 ½" WOF strips cut into six hundred and sixteen 2 ½" squares
 - Seven 2 ½" WOF strips sewn end to end and cut into two 68 ½" and two 72 ½" lengths

Half square triangle units

- Each main block contains eight red and eight grey HST units. To make each set of eight half square triangle units (HSTs), you will need one print $6\frac{1}{4}$ ", one BKG fabric $6\frac{1}{4}$ " square and one HST template. The fabric squares are $\frac{1}{2}$ " bigger than the templates so that they overhang the paper by $\frac{1}{4}$ " all around the dashed line – this is to make it easier to line up the fabrics to the paper template.
- Pin one print fabric and one BKG fabric $6\frac{1}{4}$ " square to the back of one of the HST templates with the fabrics right sides together and the BKG fabric next to the paper.
- Shorten your machine stitch to 1.5 and sew along all of the red lines. Cut the template and fabric along all the blue lines using a rotary cutter. Trim off the corners on each triangle along the green lines. Press each HST unit open and remove paper from the back of each HST unit. Repeat for the remaining sets of HST units.

Single economy squares

- To make the economy squares, you will add four BKG fabric corner square triangles to each of the $4\frac{1}{2}$ " squares of forest animals and houses fabrics. For each print square, you will need four BKG fabric $2\frac{1}{2}$ " squares. Mark diagonal lines on the back of each of them with washable marker.
- Place one of the small squares right sides together with one corner of one of the large squares and sew along the diagonal line. Repeat with a square on the opposite corner (fig 1). Trim away excess fabric $\frac{1}{4}$ " beyond the seam allowance lines (fig 2). Press over to add two triangles to the corners (fig 3). Repeat for the other two corners (fig 4).

Flying geese units

- Add BKG fabric corner square triangles to the red storm print $2\frac{1}{2}$ " x $4\frac{1}{2}$ " rectangles in the same way as you did for the economy squares (see figs 5-8).

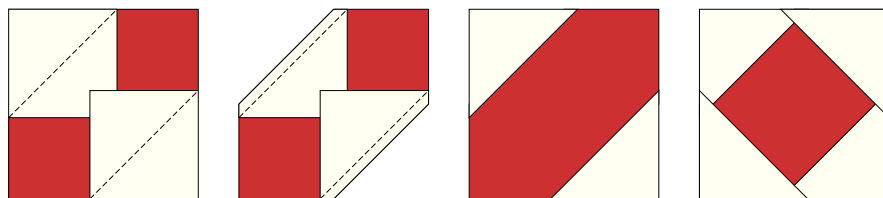
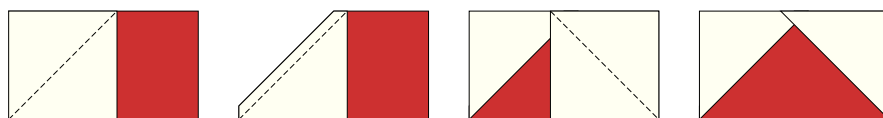


Fig 1-8

Double economy squares

- To make each of the double economy squares (DEs), you will need one double economy square template, one $2\frac{1}{2}$ " BKG fabric square, two print $2\frac{1}{2}$ " squares (trees) cut in half on the diagonal and two 3 " BKG fabric squares each cut in half on the diagonal.
- Foundation paper piece each of the DES templates using the fabrics listed at step 8, trim to the dashed lines and remove papers from the back.



Sashing the labels

- Sash the sides of all of the red and grey labels with 1 " x $3\frac{3}{4}$ " BKG fabric strips then the top and bottom with 1 " x $4\frac{3}{4}$ " BKG fabric strips. Trim to $4\frac{1}{2}$ " square.

Assembling the quilt top – fig 12

- To make each of the sixteen main blocks in the quilt top, follow figs 9 to 11 and the following steps:

- Sew the red print HSTs into pairs (fig 9)
- Sew each of the grey HSTs to a BKG fabric $2\frac{1}{2}$ " square (fig 9)
- Sew the block into five rows (fig 10)
- Sew the five rows together to finish the blocks (fig 11)

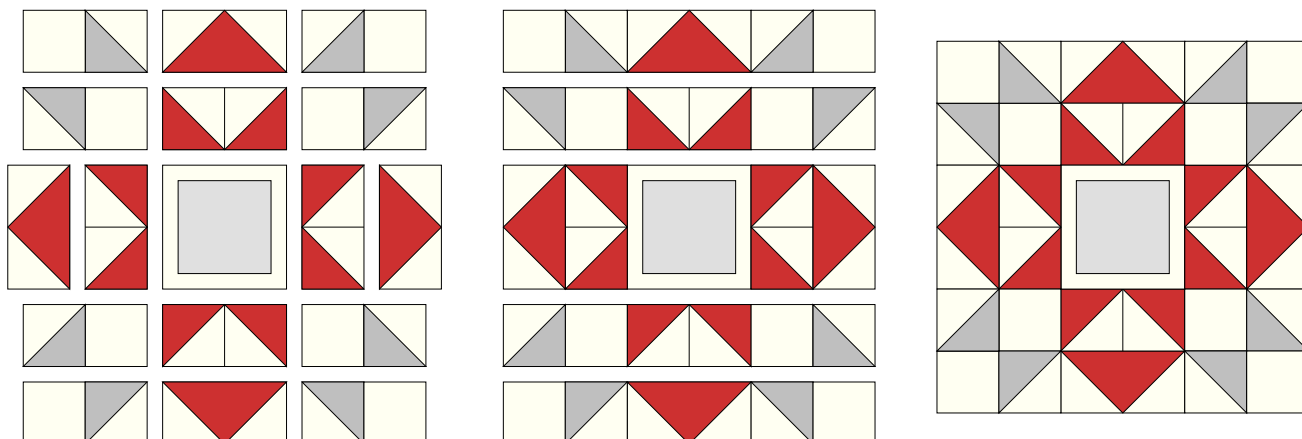


Fig 9-11

10. Sew the economy and double economy squares into sets of three – two economy squares either side of one double economy square – follow fig 12 to ensure that the directional prints are orientated so that they will be the right way up in the final quilt.
11. Again follow fig 12 to sew together the nine rows of the quilt:
 - Rows 1 and 9 will contain five red labels and four sets of red economy squares
 - Rows 2, 4, 6 and 8 will contain four star blocks, two sets of red economy squares and three sets of grey economy squares
 - Rows 3, 5 and 7 will contain five red labels and four sets of grey economy squares.
12. Sew the nine rows of the quilt top together.
13. Sash the sides with the BKG 2 ½" x 68 ½" and then the top and bottom with the BKG 2 ½" x 72 ½" strips.

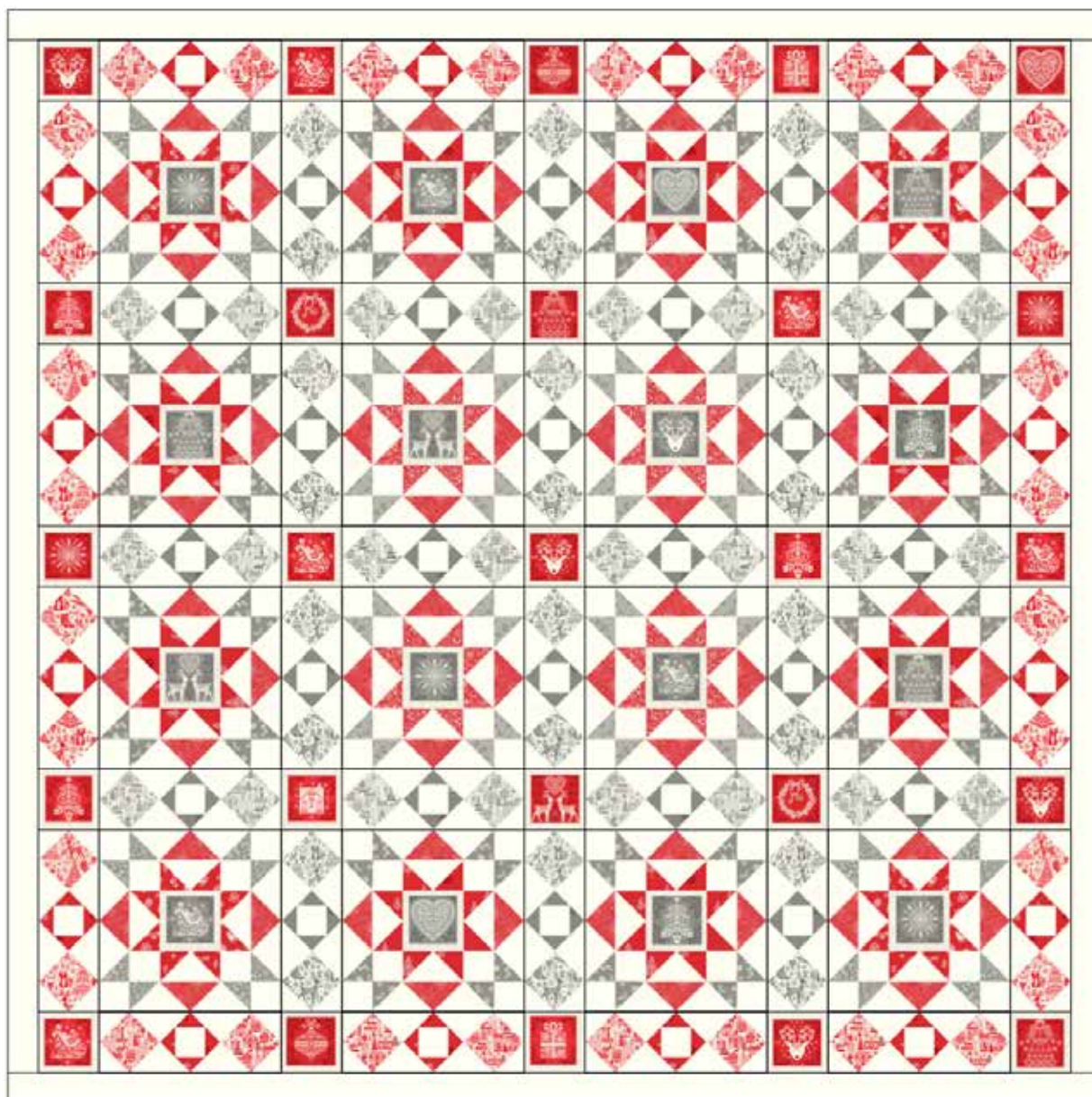
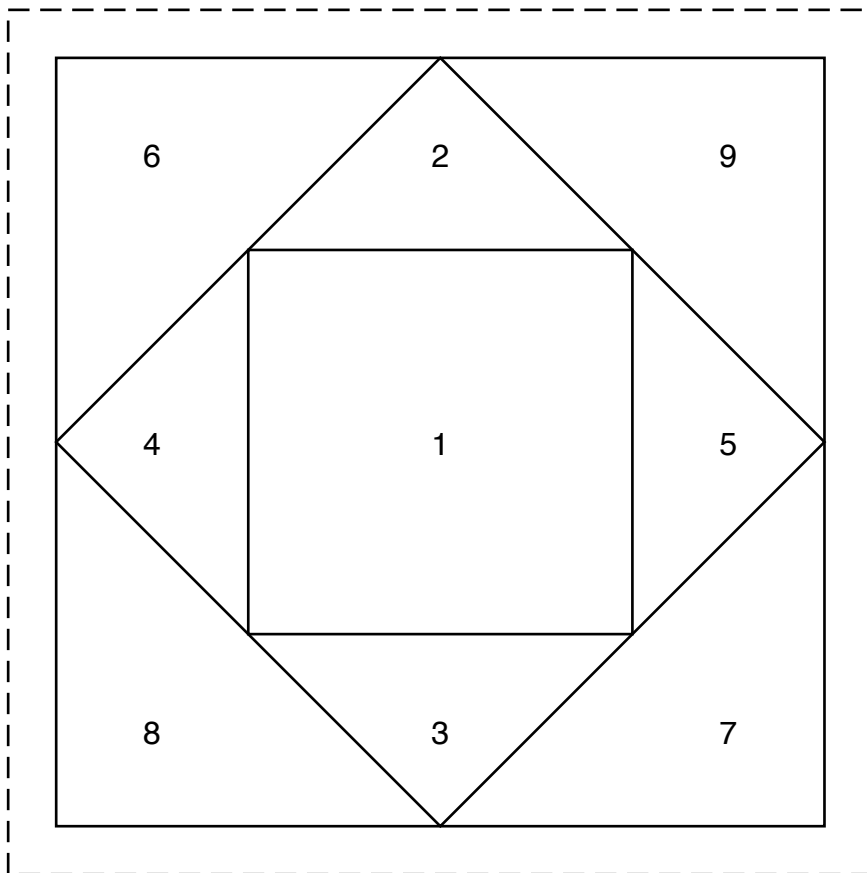
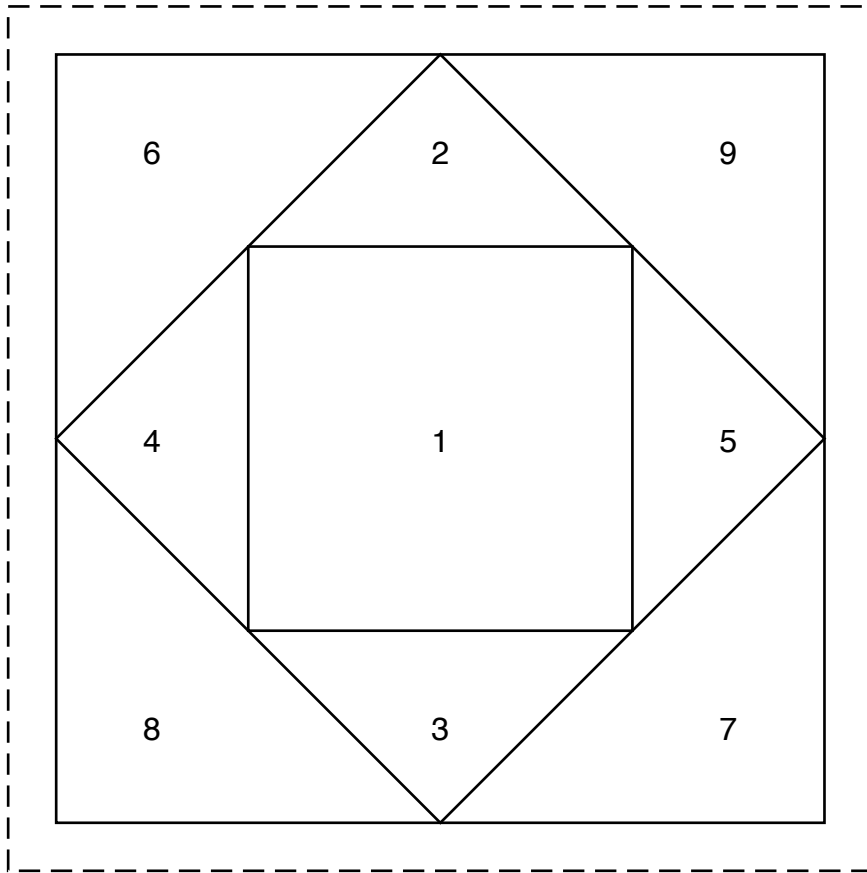


Fig 12

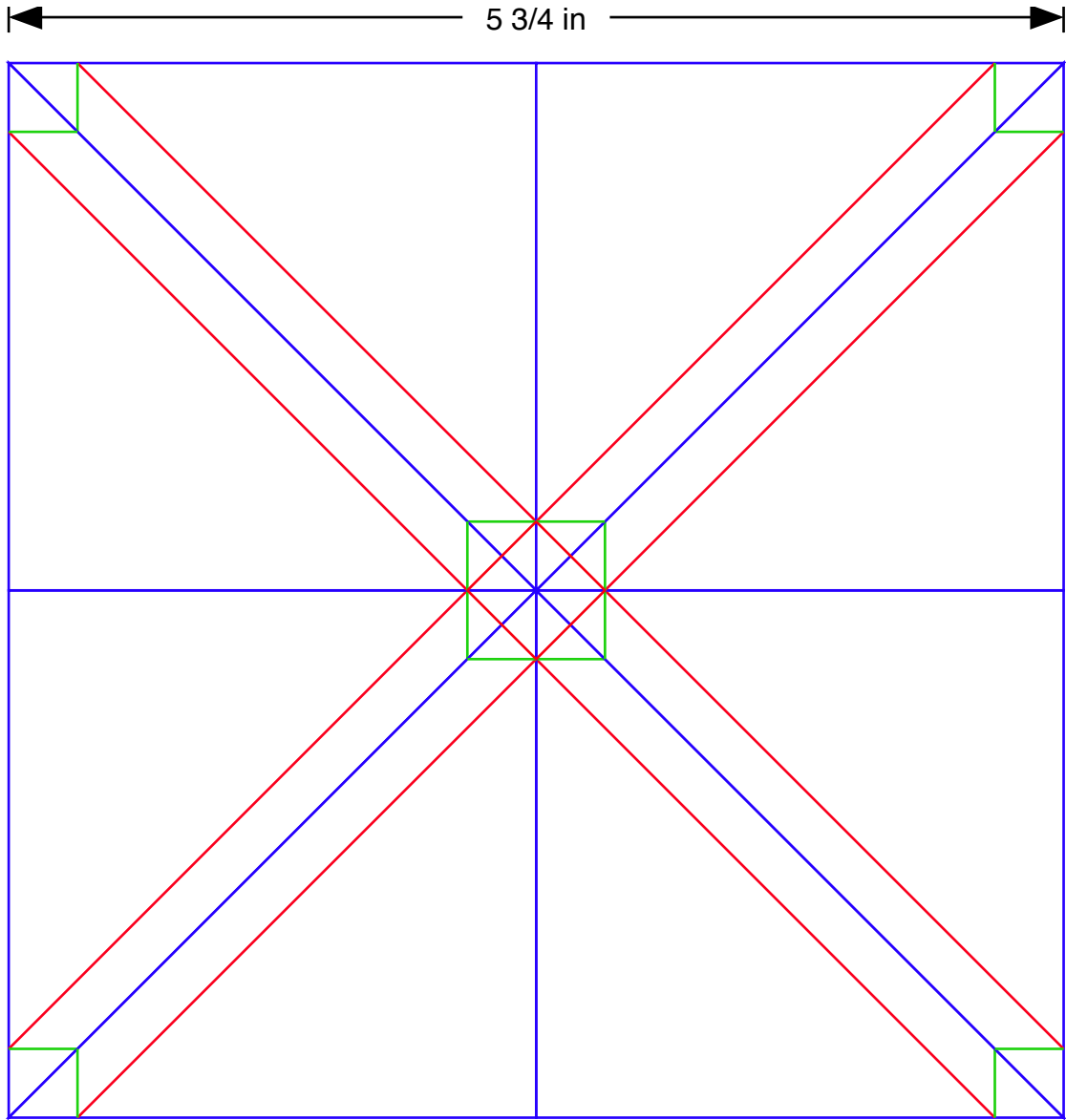
Finishing the quilt

1. Sew the binding strips end to end using diagonal or straight seams as preferred and press wrong sides together along the length to make a double fold binding.
2. Make a quilt sandwich, basting together the quilt back, the wadding and the quilt top.
3. Quilt as desired then trim the quilt square, removing excess wadding and backing. We quilted diagonal lines approximately 1 ½" apart using a crea 40wt Aurifil thread on the front and back.
4. Bind the quilt taking care to mitre the corners.



← 4 1/2 in →

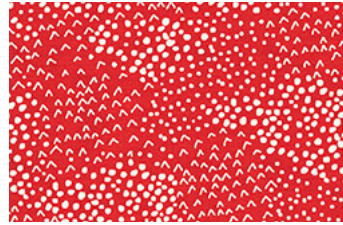
Make sure to print templates at "100%" or "no scaling" and to check that the guide line has printed to the correct length



Templates must be printed at 100% or “no scaling”. To ensure the templates are the correct size, measure the guide line to make sure it has printed at the correct length.



2125/R Forest Friends



2128/R Storm



2127/R Houses



2126/R Scatter



2130/R Snowflakes



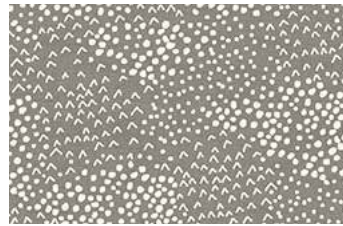
2131/R Trees



2129/R Pine Needles



2125/S Forest Friends



2128/S Storm



2127/S Houses



2126/S Scatter



2130/S Snowflakes



2131/S Trees



2129/S Pine Needles



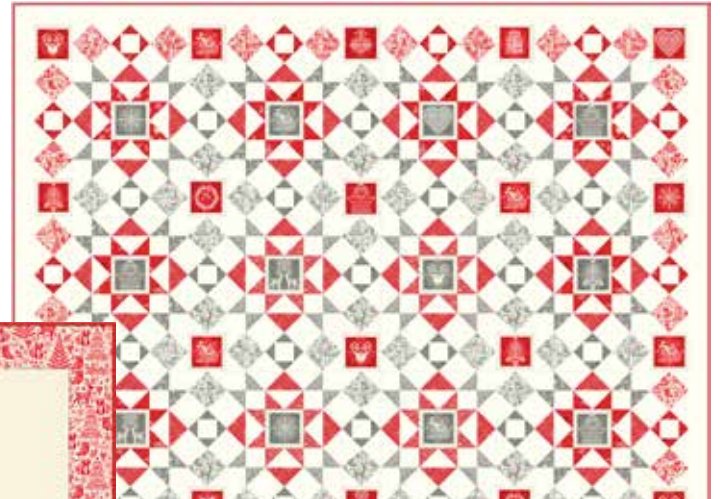
2132/1 Squares (Actual size of each square is 3")



2109/1 Stocking (Each stocking 15"/38cms) (Each panel 24" x 44" / 60 x 112cms)



2110/R Advent Calendar 2110/S (Each panel 24" x 44" / 60 x 112cms)



Free project downloads
designed by Lynne Goldsworthy of lilysquilts.blogspot.com
full instructions available from www.makoweruk.com March 2019